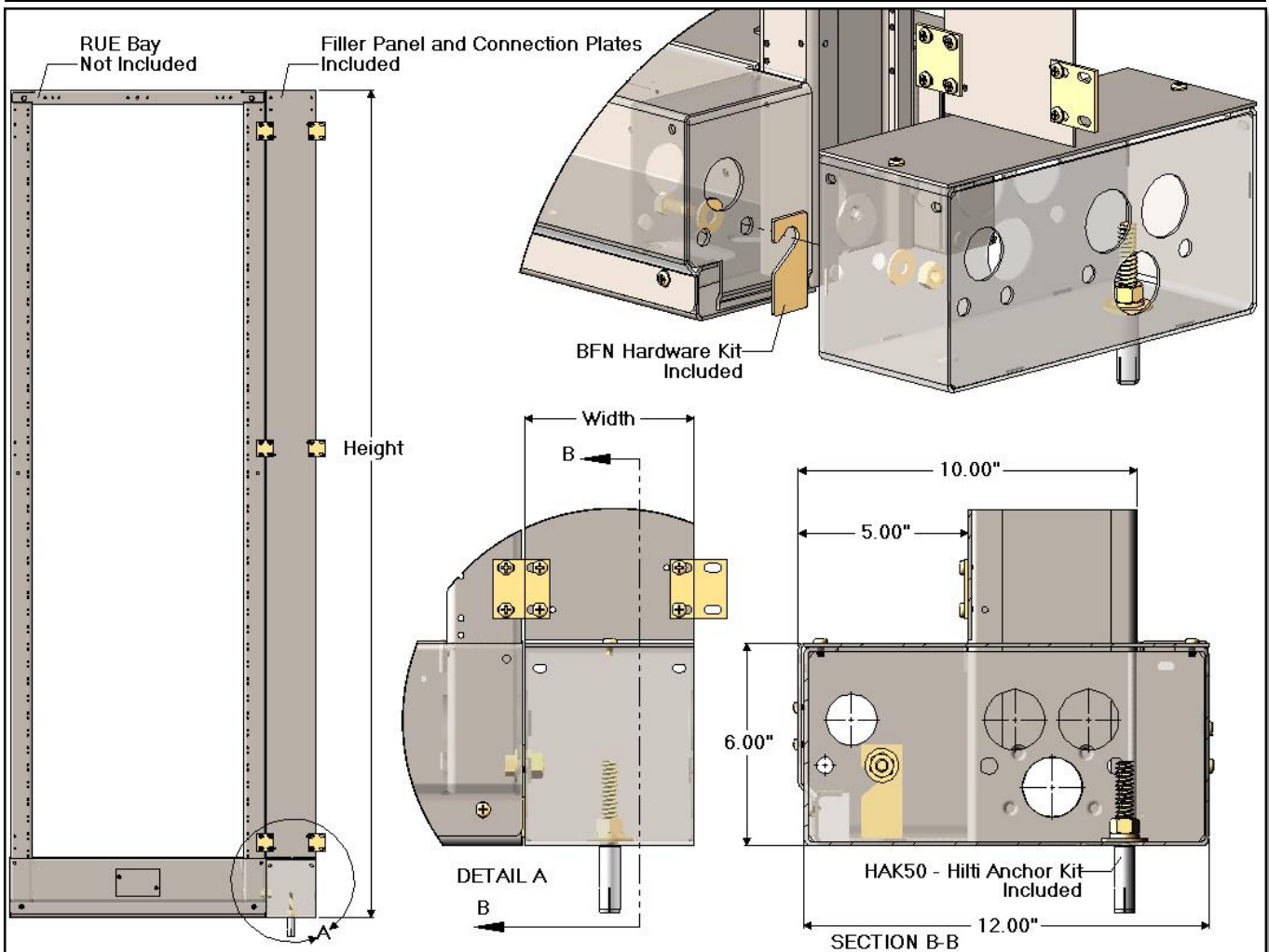


**FLA Kit Series - Unequal Flange Filler Panel Kit w/ 12.00" Depth 5+5+2 Footprint**



FLA1 Series 2.50" Filler Panel Kit w/ 12.00" Depth 5+5+2 Footprint.	
CSF P/N#	Filler Panel + Base Filler [Height]
FLA125xxK	84.00"
FLA135xxK	108.00"
FLA147xxK	138.00"

FLA2 Series 5.00" Filler Panel Kit w/ 12.00" Depth 5+5+2 Footprint.	
CSF P/N#	Filler Panel + Base Filler [Height]
FLA225xxK	84.00"
FLA235xxK	108.00"
FLA247xxK	138.00"

**Notes:**

- See FLA Series for Filler Panel only.
- Kit includes all Mounting Hardware for Filler Panel and Base Filler.
- Other sizes and finishes available upon request.

Specifications subject to change. Please contact CSF Customer Service for more information.